

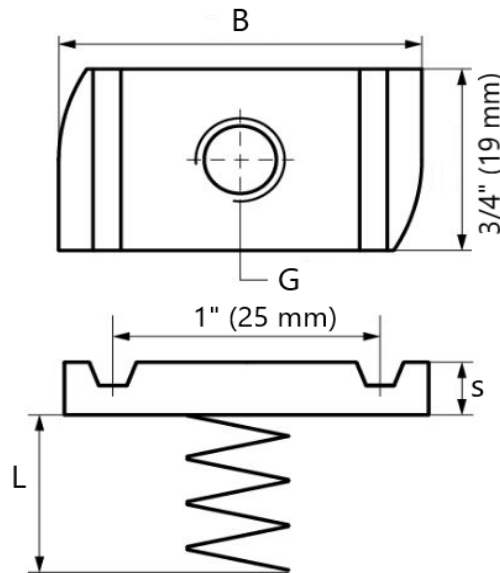
900SH STRUT NUT SHORT SPRING

Finish Zinc Plated, Hot Dipped Galvanized

Material Carbon Steel, Stainless Steel 316SS

Recommended Used to secure fittings and accessories to strut channel

Note To be used on 1" & 13/16" Strut.
Stainless Steel 316SS available only in sizes 1/4", 3/8" & 1/2".



PART NUMBER	SPECIFICATION DATA							APP'X WT. PER 100 (LBS)	PC'S PER PKG.
	G	B (")	B (mm)	s (")	s (mm)	L (")	L (mm)		
900SH 1/4	1/4"	1 3/8	35	1/4	6	3/4	19	8	100
900SH 5/16	5/16"	1 3/8	35	3/8	9	3/4	19	6	100
900SH 3/8	3/8"	1 3/8	35	3/8	9	3/4	19	8	100
900SH 1/2	1/2"	1 3/8	35	3/8	9	3/4	19	16	100
900SH M6	M6	1 5/16	34	3/16	5	1/2	13	6	100
900SH M8	M8	1 5/16	34	1/4	6	1/2	13	6	100
900SH M10	M10	1 5/16	34	5/16	8	1/2	13	7	100

QWI 4.3.1 Issue Date Dec/23 Rev.2

Note: when referencing a printed copy of this specification page, please insure it is the latest version as found on our website at www.taylorwalraven.ca

For more information, please contact Customer Service at 1-800-263-8652